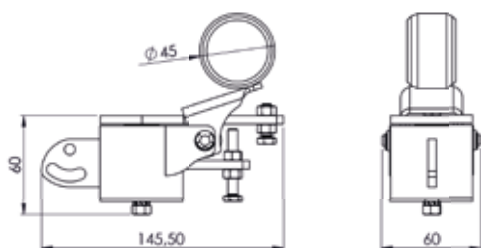


INTERNAL STRIKERS / MARTEAUX ÉLECTRIQUES INTERNES
ELE30-35-40-45-50

The internal bell strikers are used for tolling the bells, carillons and on fixed bells. They are available in five standard types for bells between 10 kg (22 lb) and 500 kg (1100 lb). The speed and power of the percussion are adjustable to ensure that the sound is harmonious and powerful. The use of direct current allows a minimum power consumption and the total absence of noise during the functioning. Strikers are simple, of solid construction and easy to install.

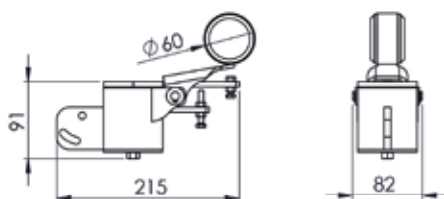
Ce marteau électrique placé à l'intérieur de la cloche est utilisé pour le carillon. Cinq modèles standard pour cloches entre 10 et 500 kg sont disponibles. La vitesse et la puissance de frappe sont réglables afin de émettre un son harmonieux et pur. L'utilisation de courant continu permet une très faible consommation et l'absence de «bruit électrique» pendant le fonctionnement. Cet électro-tintement se distingue par sa robustesse de construction et sa facilité d'installation.

STRIKER ELE30
MARTEAU ÉLECTRIQUE ELE30

TECHNICAL CHARACTERISTICS

- Percussion power: for bells up to 28 kg (62 lb)
- Hammer: 0,4 kg (0,9 lb)
- Power supply: 220 VDC/1 A
- Strikes per seconds: 4

CODE	DESCRIPTION
ELE3004001	INTERNAL STRIKER ELE30 FOR BELLS UP TO 30 KG (66LB)

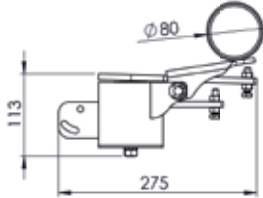
STRIKER ELE35
MARTEAU ÉLECTRIQUE ELE35

TECHNICAL CHARACTERISTICS

- Percussion power: for bells up to 59 kg (130 lb)
- Hammer: 0,9 kg (2 lb)
- Power supply: 220 VDC/1,25 A
- Strikes per seconds: 4

CODE	DESCRIPTION
ELE3504001	INTERNAL STRIKER ELE35 FOR BELLS 30-60 KG (66LB-130LB)

INTERNAL STRIKERS / MARTEAUX ÉLECTRIQUES INTERNES
ELE30-35-40-45-50

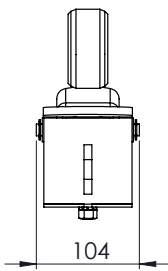
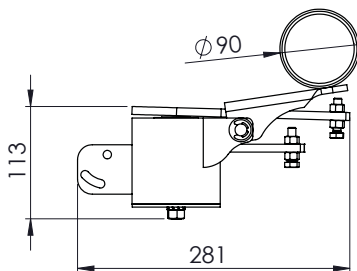


STRIKER ELE40
MARTEAU ÉLECTRIQUE ELE40

TECHNICAL CHARACTERISTICS

- Percussion power: for bells up to 150 kg (330 lb)
- Hammer: 2 kg (4,5 lb)
- Power supply: 220 VDC / 1,5 A
- Strikes per seconds: 3

CODE	DESCRIPTION
ELE4004001	INTERNAL STRIKER ELE40 FOR BELLS 60-150 KG (130LB-320LB)

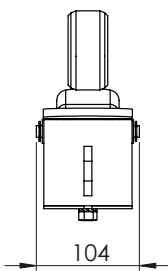
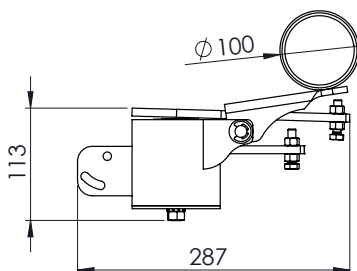


STRIKER ELE45
MARTEAU ÉLECTRIQUE ELE45

TECHNICAL CHARACTERISTICS

- Percussion power: for bells up to 300 kg (600 lb)
- Hammer: 2,5 Kg (5,5 lb)
- Power supply: 220 VDC / 2,5 A
- Strikes per seconds: 3

CODE	DESCRIPTION
ELE4504001	INTERNAL STRIKER ELE45 FOR BELLS 150-300 KG (320LB-600LB)



STRIKER ELE50
MARTEAU ÉLECTRIQUE ELE50

TECHNICAL CHARACTERISTICS

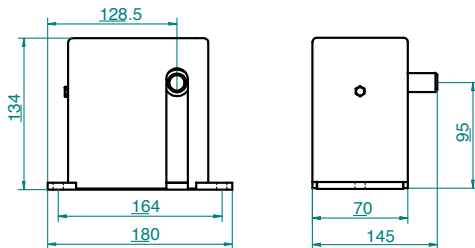
- Percussion power: for bells up to 500 Kg (1100 lb)
- Hammer: 3,4 kg (7,5 lb)
- Power supply: 220 VDC / 3 A
- Strikes per seconds: 3

CODE	DESCRIPTION
ELE5004001	INTERNAL STRIKER ELE50 FOR BELLS 300-500 KG (600LB-1100LB)

EXTERNAL STRIKERS / MARTEAUX ÉLECTRIQUES EXTERNES ELE05-10-15-20

Strikers are used for tolling the bells, carillons, lauds and hour striking. They are available in four standard types for bells between 15 kg (33 lb) and 2300 kg (5000 lb). The speed and power of the percussion are adjustable to ensure that the sound is harmonious and powerful. The use of direct current allows a minimum power consumption and the total absence of noise during the functioning. Strikers are simple, of solid construction and easy to install.

Les marteau électrique sont utilisés pour les tintements, les carillons, l'Angélus, la sonnerie des heures. Il y a quatre modèles standard disponibles pour des cloches d'un poids à partir de 15 kg jusqu'à 2300 kg. La puissance et la vitesse de percussion sont réglables donnant à la cloche toutes ses harmonies avec la force souhaitée. L'utilisation du courant continu permet une consommation d'électricité très faible et l'absence de « bruit électrique » pendant le fonctionnement. Les marteaux électriques ECAT sont simples, très solides et très faciles à installer.

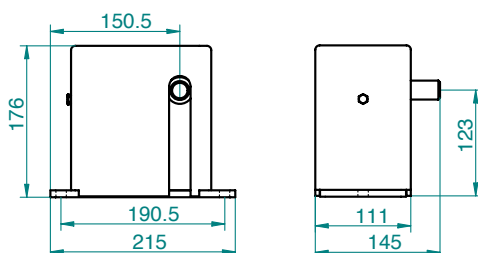


ELE05 STRIKER W/ O Mallet MARTEAU ÉLECTRIQUE ELE05 SANS BOULE

TECHNICAL CHARACTERISTICS

- Percussion power: for bells up to 85 Kg (190 lb)
- Hammer: from 0,2 to 0,5 kg (0,45 lb - 1,1 lb)
- Power supply: 220 VDC / 1 A
- Tollings: 5 per second
- Torque: 3,9 Nm
- Case: ABS

CODE	DESCRIPTION
ELE0504001	EXTERNAL STRIKER ELE05 FOR BELLS UP TO 100 KG (220LB)



ELE10 STRIKER W/ O Mallet MARTEAU ÉLECTRIQUE ELE10 SANS BOULE

TECHNICAL CHARACTERISTICS

- Percussion power: for bells up to 470 kg (1036 lb)
- Hammer: from 0,5 to 2 kg (1,1 lb - 4,5 lb)
- Power supply: 220 VDC / 2,5 A
- Tollings: 4 per second
- Torque: 16,6 Nm
- Case: ABS

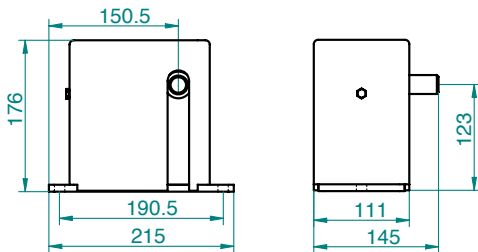
CODE	DESCRIPTION
ELE1004001	EXTERNAL STRIKER ELE10 FOR BELLS 100-500 KG (220-1100LB)



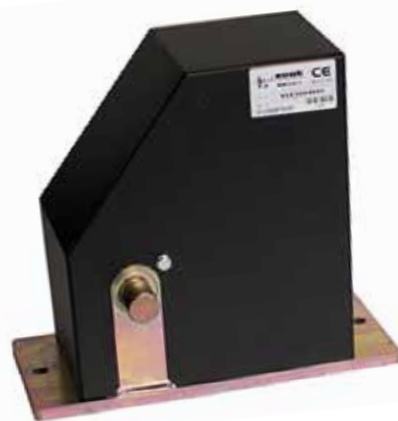
ELE15 STRIKER W/O Mallet
MARTEAU ÉLECTRIQUE ELE15 SANS BOULE

TECHNICAL CHARACTERISTICS

- Percussion power: for bells up to 1370 Kg (3020 lb)
- Hammer: from 2 to 5 kg (4,5 lb - 11 lb)
- Power supply: 220 VDC / 3 A
- Tollings: 3 per second
- Torque: 23,5 Nm
- Case: ABS



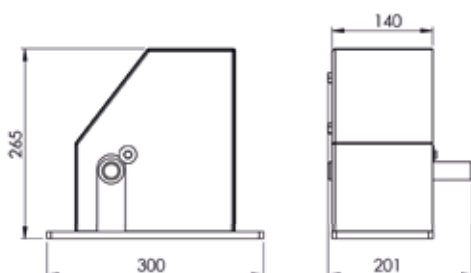
CODE	DESCRIPTION
ELE1504001	EXTERNAL STRIKER ELE15 FOR BELLS 500-1300 KG (1100-2860LB)
ELE1504002	EXTERNAL STRIKER ELE15 FOR BELLS 1000-1500 KG (2200-3300LB)



ELE20 STRIKER W/ O Mallet
MARTEAU ÉLECTRIQUE ELE20 SANS BOULE

TECHNICAL CHARACTERISTICS

- Percussion power: for bells up to 2300 kg (5070 lb)
- Hammer: from 5 to 9 Kg (11 lb - 20 lb)
- Power supply: 220 VDC / 5 A
- Tollings: 2 per second
- Torque: 63,7 Nm
- Case: sheet metal



CODE	DESCRIPTION
ELE2004001	EXTERNAL STRIKER ELE20 FOR BELLS 1300-2500 KG (2860-5510LB)

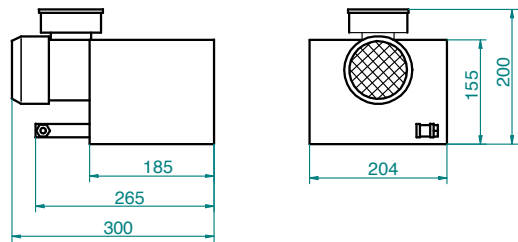
MOTORIZED STRIKERS

TINTEMENTS À TIRAGE POUR BRAS DE FRAPPE MÉCANIQUE

ELE25

The motorized striker is used for tolling heavy bells. The use of asynchronous three-phase motors, the particularly robust construction and the simplicity of the installation ensures that this product is extremely reliable.

Le tintement à moteur est utilisé pour s'adapter sur des frappes mécaniques souvent existantes et sur des cloches de très grands diamètres. L'utilisation d'un moteur asynchrone triphasé, la structure particulièrement robuste, la simplicité de fonctionnement, rendent ce produit particulièrement attractif.



TECHNICAL CHARACTERISTICS

- Asynchronous three-phase motor 220V 380V 6 poles
- Power 0,09 Kw (0,12 HP)
- Percussion speed: 1 stroke/1,5 s

CODE	DESCRIPTION
ELE2504001	3 PHASE MOTORIZED STRIKER

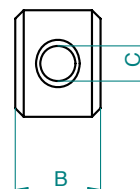
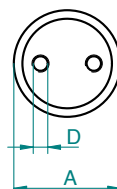
HAMMERS FOR STRIKERS

BOULES DE FRAPPE POUR MARTEAUX ÉLECTRIQUES

MAZ05-10

The hammer is the element that comes directly into contact with the bell. It has to be dimensioned to the weight of the bell and of the striker used. In particular, the adjustable hammer has to be matched with a pole for adjustable hammer. This kind of regulation allows in the possibility of modifying the length of the arm.

La boule de frappe est la partie qui entre directement en contact avec la cloche. Elle doit être proportionnée avec le poids de la cloche et du marteau électrique utilisé. En particulier la boule réglable de frappe doit être couplée avec un bras pour boule de frappe réglable. Cette variante offre la possibilité de modifier la longueur du bras.



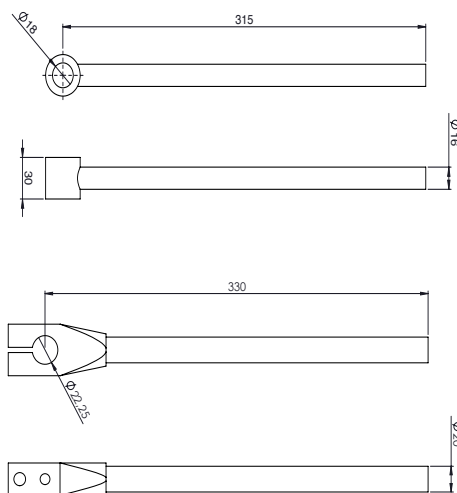
CODE	DESCRIPTION	HAMMER NUMBER	A (mm)	B (mm)	C (mm)	D (mm)	HAMMER WEIGHT (Kg)
MAZ0504006	ADJUSTABLE HAMMER N. 3 FOR STRIKER ELE05	03	50	40	16,5	2 X 8 MA	0.600
MAZ0504007	ADJUSTABLE HAMMER N. 4 FOR STRIKER ELE05	04	60	40	16,5	2 X 8 MA	0.850
MAZ1004012	ADJUSTABLE HAMMER N. 3 FOR STRIKER ELE10-15	3	50	50	20,5	2 X 8 MA	0,750
MAZ1004013	ADJUSTABLE HAMMER N. 4 FOR STRIKER ELE10-15	4	60	50	20,5	2 X 10 MA	1,05
MAZ1004014	ADJUSTABLE HAMMER N. 5 FOR STRIKER ELE10-15	5	70	50	20,5	2 X 10 MA	1,5
MAZ1004015	ADJUSTABLE HAMMER N. 6 FOR STRIKER ELE10-15	6	80	50	20,5	2 X 12 MA	1,9
MAZ1004016	ADJUSTABLE HAMMER N. 7 FOR STRIKER ELE10-15	7	90	50	20,5	2 X 12 MA	2,4
MAZ1004017	ADJUSTABLE HAMMER N. 8 FOR STRIKER ELE10-15	8	90	60	20,5	2 X 12 MA	2,9
MAZ1004018	ADJUSTABLE HAMMER N. 9 FOR STRIKER ELE10-15	9	100	60	20,5	2 X 12 MA	3,5
MAZ1004019	ADJUSTABLE HAMMER N. 10 FOR STRIKER ELE10-15	10	100	70	20,5	2 X 12 MA	4,2

CODE	DESCRIPTION	HAMMER NUMBER	A (mm)	L (LENGTH) (mm)	B HAMMER THICKNESS (mm)	HAMMER WEIGHT (Kg)
MAZ1504001	FIXED HAMMER N.11 FOR STRIKER ELE20	11	120	283	60	5,1
MAZ1504002	FIXED HAMMER N. 12 FOR STRIKER ELE20	12	120	283	70	5,95
MAZ1504003	FIXED HAMMER N. 13 FOR STRIKER ELE20	13	130	283	75	6,8
MAZ1504004	FIXED HAMMER N. 14 FOR STRIKER ELE20	14	130	283	85	8,5

POLE FOR ADJUSTABLE HAMMER / BRAS DE FRAPPE POUR BOULE RÉGLABLE MAZ05-10

The pole for adjustable hammer has to be clearly matched with a particular adjustable hammer. This kind of regulation consists in the possibility to modify the length of the arm to get round difficulties in fixing of the striker.

Le bras de frappe pour boule réglable doit être couplé à une boule de frappe spécifique réglable. Cette variante offre la possibilité de modifier la longueur du bras afin de faciliter la fixation du marteau électrique.



CODE	DESCRIPTION	Length (mm)	Diameter (mm)
MAZ0504005	POLE FOR ADJUSTABLE HAMMER FOR STRIKER ELE05	315	16
MAZ0504011	POLE FOR ADJUSTABLE HAMMER FOR STRIKER ELE10-15	330	20



COMPATIBILITY TABLE BELL/STRIKER/HAMMER

TABLEAU DE CORRESPONDANCE CLOCHE/MARTEAU ÉLECTRIQUE/BOULE DE FRAPPE

TONE	ANGLO-SAXON TONE	DIAMETER (mm)	HAMMER WEIGHT (Kg)	ADJUSTABLE HAMMER FOR ELE05 STRIKER	ADJUSTABLE HAMMER FOR ELE10 STRIKER	ADJUSTABLE HAMMER FOR ELE1504001 STRIKER	ADJUSTABLE HAMMER FOR ELE1504002 STRIKER	ADJUSTABLE HAMMER FOR ELE20 STRIKER
SOL	G3	240	9	MAZ0504006				
SOLb	Fis3	250	10	MAZ0504006				
FA	F3	260	12	MAZ0504006				
MI	E3	280	14	MAZ0504006				
Mlb	Dis3	295	16	MAZ0504006				
RE	D3	315	19	MAZ0504006				
REb	Cis3	335	22	MAZ0504006				
DO	C3	355	26	MAZ0504006				
SI	B2	375	31	MAZ0504006				
Slb	Ais2	400	37	MAZ0504006				
LA	A2	420	43	MAZ0504007				
Lab	Gis2	445	50	MAZ0504007				
SOL	G2	470	60	MAZ0504007	MAZ1004012			
SOLb	Fis2	500	72	MAZ0504007	MAZ1004012			
FA	F2	530	85	MAZ0504007	MAZ1004012			
MI	E2	560	100	MAZ0504007	MAZ1004013			
Mlb	Dis2	595	120		MAZ1004013			
RE	D2	630	140		MAZ1004013			
REb	Cis2	665	170		MAZ1004013			
DO	C2	705	200		MAZ1004014			
SI	B1	750	245		MAZ1004014			
Slb	Ais1	795	290		MAZ1004014			
LA	A1	840	340		MAZ1004014			
Lab	Gis1	890	410		MAZ1004014	MAZ1004014		
SOL	G1	945	480		MAZ1004015	MAZ1004015		
SOLb	Fis1	1000	550		MAZ1004015	MAZ1004015		
FA	F1	1060	680			MAZ1004016		
MI	E1	1120	810			MAZ1004017		
Mlb	Dis1	1185	980			MAZ1004018		
RE	D1	1255	1200			MAZ1004019	MAZ1004019	MAZ1504001
REb	Cis1	1330	1400			MAZ1004019	MAZ1004019	MAZ1504001 MAZ1504002
DO	C1	1410	1680				MAZ1004019	MAZ1504002
SI	B0	1495	1950					MAZ1504003
Slb	Ais0	1580	2300					MAZ1504004
LA	A0	1675	2800					MAZ1504004
Lab	Gis0	1775	3300					
SOL	G0	1880	3900					
SOLb	Fis0	1995	4900					

TABLE OF PRODUCT CODES

ACCESSORIES

CODE	DESCRIPTION
ELE3004001	INTERNAL STRIKER ELE30 FOR BELLS UP TO 30 KG (66LB)
ELE3504001	INTERNAL STRIKER ELE35 FOR BELLS 30-60 KG (66LB-130LB)
ELE4004001	INTERNAL STRIKER ELE40 FOR BELLS 60-150 KG (130LB-320LB)
ELE4504001	INTERNAL STRIKER ELE45 FOR BELLS 150-300 KG (320LB-600LB)
ELE5004001	INTERNAL STRIKER ELE50 FOR BELLS 300-500 KG (600LB-1100LB)
ELE0504001	EXTERNAL STRIKER ELE05 FOR BELLS UP TO 100 KG (220LB)
ELE1004001	EXTERNAL STRIKER ELE10 FOR BELLS 100-500 KG (220-1100LB)
ELE1504001	EXTERNAL STRIKER ELE15 FOR BELLS 500-1300 KG (1100-2860LB)
ELE1504002	EXTERNAL STRIKER ELE15 FOR BELLS 1000-1500 KG (2200-3300LB)
ELE2004001	EXTERNAL STRIKER ELE20 FOR BELLS 1300-2500 KG (2860-5510LB)
ELE2504001	3 PHASE MOTORIZED STRIKER
MAZ0504005	POLE FOR ADJUSTABLE HAMMER FOR STRIKER ELE05
MAZ0504006	ADJUSTABLE HAMMER N. 3 FOR STRIKER ELE05
MAZ0504007	ADJUSTABLE HAMMER N. 4 FOR STRIKER ELE05
MAZ1004011	POLE FOR ADJUSTABLE HAMMER FOR STRIKER ELE05-10
MAZ1004012	ADJUSTABLE HAMMER N. 3 FOR STRIKER ELE10-15
MAZ1004013	ADJUSTABLE HAMMER N. 4 FOR STRIKER ELE10-15
MAZ1004014	ADJUSTABLE HAMMER N. 5 FOR STRIKER ELE10-15
MAZ1004015	ADJUSTABLE HAMMER N. 6 FOR STRIKER ELE10-15
MAZ1004016	ADJUSTABLE HAMMER N. 7 FOR STRIKER ELE10-15
MAZ1004017	ADJUSTABLE HAMMER N. 8 FOR STRIKER ELE10-15
MAZ1004018	ADJUSTABLE HAMMER N. 9 FOR STRIKER ELE10-15
MAZ1004019	ADJUSTABLE HAMMER N. 10 FOR STRIKER ELE10-15
MAZ1504001	FIXED HAMMER N.11 FOR STRIKER ELE20
MAZ1504002	FIXED HAMMER N. 12 FOR STRIKER ELE20
MAZ1504003	FIXED HAMMER N. 13 FOR STRIKER ELE20
MAZ1504004	FIXED HAMMER N. 14 FOR STRIKER ELE20
ELE8504001	FIXING BRACKET FOR ELE05 STRIKER
ELE8504002	FIXING BRACKET FOR ELE10-15 STRIKER
ELE8504003	FIXING BRACKET FOR ELE20 STRIKER
ELE8504010	FIXING BRACKET FOR ELE30-35 STRIKER
ELE8504011	FIXING BRACKET FOR ELE40 STRIKER
ELE8504012	FIXING BRACKET FOR ELE45-50 STRIKER
PRAD-BR5010	DIODE BRIDGE 50A 1000V
PRAD-KBL407	DIODE BRIDGE 4A 1000V